



SILVER REPORT

Saturday - 27 December, 2025

Silver's 50% Surge Explained: How Global Industrial Demand Triggered a Structural Repricing

Silver has delivered an exceptional rally over the past one to one-and-a-half months, translating into an approximate 50% gain on MCX silver. This move has naturally raised questions among investors: Why did silver rise so sharply? Why now? And how sustainable is this move?

Our analysis indicates that this is not a speculative spike driven by headlines or short-term enthusiasm. Instead, silver is undergoing a structural repricing at the global level. The metal has quietly transitioned from being viewed primarily as a precious or trading metal to being recognised as a strategic industrial asset. This shift—combined with physical tightness and stress in leveraged paper markets—has accelerated global price discovery and directly impacted Indian markets.

What This Report Explains

- Why silver's recent rally is structural, not emotional or speculative
- How industrial demand has permanently changed silver's price behaviour
- Why paper markets struggled once physical availability became relevant
- How global repricing transmitted directly into MCX silver prices
- What to expect in 2026, including upside potential and volatility risks

The Fundamental Shift: Silver Has Changed Its Role

For decades, silver was largely analysed as a jewellery metal, an investment hedge, or a trading commodity. That framework no longer explains current price behaviour.

Today, silver is deeply embedded in critical global production systems. Renewable energy expansion, electrification of economies, digitalisation, and rising defence requirements have elevated silver from a discretionary input to a core requirement for growth and security.

This matters because industrial demand behaves very differently from investment demand. Investors can delay purchases when prices rise. Industries cannot—production lines do not stop waiting for cheaper silver. Once silver became essential to production continuity, the market stopped behaving like a typical precious metal and began behaving like a strategic industrial input. This shift laid the foundation for the sharp repricing witnessed in late 2025.



Silver's 50% Surge Explained: How Global Industrial Demand Triggered a Structural Repricing

Industrial Demand: Where Silver Cannot Be Easily Replaced

Silver has the highest electrical conductivity of all metals, a physical property that makes it indispensable in high-performance applications. It plays a critical role in:

- Solar panels, where silver paste collects and conducts electricity efficiently
- Electronics and semiconductors, including circuits, connectors, and switches
- Power grids and electrification, where reliability outweighs cost
- Defence and aerospace systems, where substitution is often not acceptable

In these applications, performance and reliability matter more than price. As a result, demand has become price-inelastic—industries continue buying silver even as prices rise. This is a major departure from earlier cycles and explains why silver rallies are now harder to stop and why pullbacks have become shallower.

When Paper Markets Met Physical Reality

For many years, silver prices were shaped primarily by paper trading—futures and options. That system works efficiently as long as physical availability is assumed to be ample and delivery risk remains low.

As global prices moved into sensitive zones (around \$75 per ounce), this assumption weakened. Participants positioned against the rally were forced to adjust, while sellers became hesitant amid tightening physical conditions. Liquidity thinned just as buying pressure increased.

This interaction explains why silver recorded large single-day moves and rapid weekly gains. Such price action is typical when markets transition from opinion-driven trading to risk- and delivery-sensitive repricing.

Why MCX Silver Reflected the Move So Sharply

Indian silver prices are closely linked to global benchmarks through import parity and currency transmission. MCX silver does not operate in isolation. When global silver prices, domestic prices adjust almost immediately.

Recent MCX silver data illustrates this clearly:

Close: ₹239,787/kg

1-day move: +7.15%

5-day move: +18.12%

1-month move: +52%

Crucially, prices consistently closed near daily highs, signalling acceptance rather than panic. This confirms that MCX silver is responding to global structural changes, not reacting irrationally to short-term volatility.



Silver's 50% Surge Explained: How Global Industrial Demand Triggered a Structural Repricing

Why This Rally Is Different From Past Cycles

Earlier silver rallies often faded because demand cooled at higher prices and supply responded relatively quickly. This time, conditions are different:

- Industrial demand remains firm
- Supply responds slowly
- Physical availability matters
- Strategic and policy considerations are rising

As a result, corrections—if they occur—are more likely to be time-based consolidations rather than sharp price collapses.

2026 Outlook: Opportunity With Volatility

With strong gains already recorded in 2025, silver enters 2026 with a constructive but volatile outlook.

Upside Potential:

If physical tightness persists and industrial demand remains robust, silver can continue its structural repricing. In such environments, there is no fixed price ceiling, and a move toward \$90–\$100 per ounce over the next 1–2 years is possible.

Historical Reality Check:

Silver is also known for extreme volatility. The rallies of 1980 and 2011 were followed by sharp and rapid corrections once positioning flipped and liquidity returned. These episodes highlight that silver rarely moves in a straight line.

Key Support Zone:

On a long-term framework, \$40 per ounce remains a critical structural support area where value-based demand historically re-emerges after excesses.

For Indian investors, this implies continued volatility on MCX, with sharp swings in both directions. Volatility is not a weakness—it is the cost of participation in a structurally changing market.



Silver's 50% Surge Explained: How Global Industrial Demand Triggered a Structural Repricing

Key Takeaway

Silver has transitioned from a trading metal to a strategic industrial asset, and the recent 50% rally reflects a genuine structural repricing driven by global industrial demand, physical constraints, and changing market mechanics. From a medium-term perspective, conditions remain supportive, and a move toward \$100 per ounce over the next 1–2 years is possible if supply constraints persist.

However, investors must remain disciplined and cautious. Silver is historically one of the most volatile commodities, and past cycles—most notably 1980 and 2011—demonstrate that powerful rallies can be followed by equally sharp corrections. When optimism turns into FOMO-driven participation, risk rises sharply.

It is also important to remember a fundamental rule of commodities: every commodity eventually faces substitution at extreme prices. While silver currently has limited substitutes in many critical applications, sustained high prices inevitably accelerate technological innovation, efficiency improvements, recycling, and material substitution, which can moderate demand over time.

Therefore, while the broader structure supports higher prices, downside risk must be respected. On a long-term framework, \$40 per ounce remains a critical structural support zone, and prices can revisit such levels during periods of liquidation, macro stress, or demand adjustment.

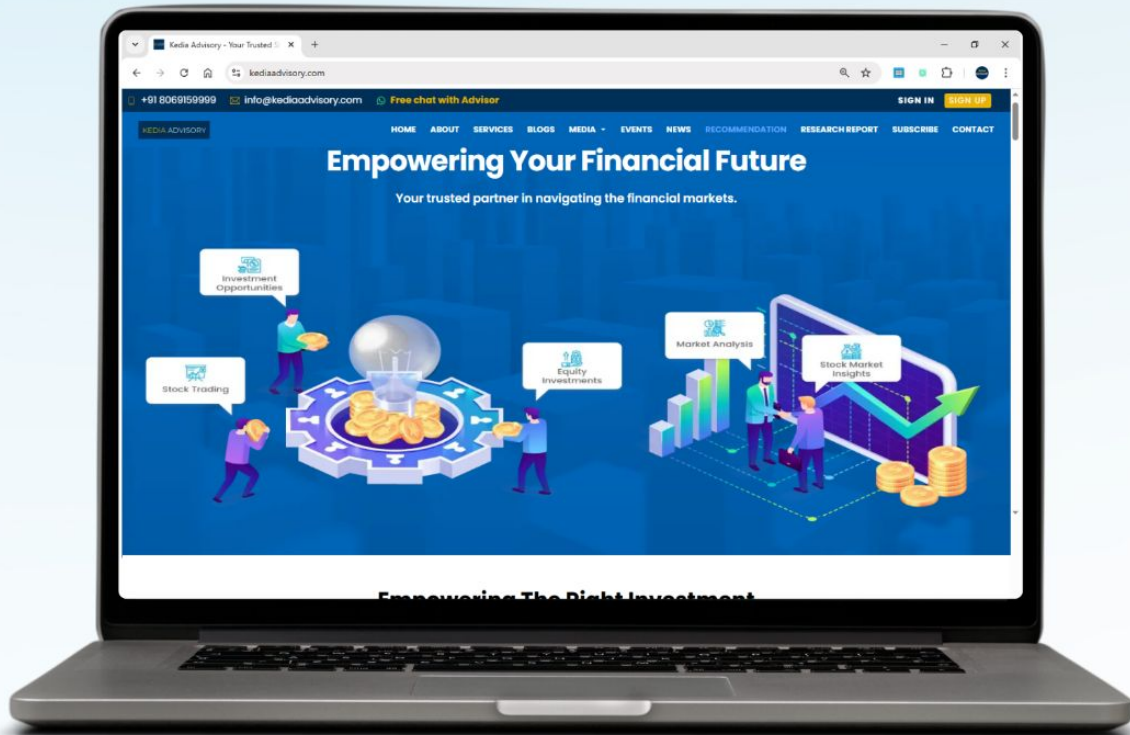
Do not chase prices blindly.

Opportunity in silver is real—but it must be approached with risk management, staggered positioning, and full awareness of volatility.

Strong fundamentals create opportunity—but discipline protects capital.



Stay Ahead in Markets with Kedia Advisory



Get Live Commodity & Equity Market Updates backed by in-depth research, data-driven insights, and expert analysis.



Why Kedia Advisory

- Real-time market updates
- Key levels & trend direction
- Research-based market views
- Trusted by active traders & investors

Visit: Kedia Advisory Website

www.kediaadvisory.com

CLICK HERE



SCAN ME



Kedia Stocks and Commodities Research Pvt Ltd

SEBI REGISTRATION NUMBER : INH000006156

Aadinath Commercial, Opp. Mumbai University, Vasant Valley Road, Khadakpada, Kalyan West

Investment in securities market are subject to market risks, read all the Related documents carefully before investing.



**Scan the QR to
connect with us**



KEDIA ADVISORY

KEDIA STOCKS & COMMODITIES RESEARCH PVT LTD.

Mumbai. INDIA.

For more details, please contact Mobile: +91 9619551022

Email: info@kediaadvisory.com

SEBI REGISTRATION NUMBER - INH000006156

For more information or to subscribe for monthly updates

Visit www.kediaadvisory.com

This Report is prepared and distributed by Kedia Stocks & Commodities Research Pvt Ltd. for information purposes only. The recommendations, if any, made herein are expressions of views and/or opinions and should not be deemed or construed to be neither advice for the purpose of purchase or sale through KSCRPL nor any solicitation or offering of any investment /trading opportunity. These information/opinions/ views are not meant to serve as a professional investment guide for the readers. No action is solicited based upon the information provided herein. Recipients of this Report should rely on information/data arising out of their own investigations. Readers are advised to seek independent professional advice and arrive at an informed trading/investment decision before executing any trades or making any investments. This Report has been prepared on the basis of publicly available information, internally developed data and other sources believed by KSCRPL to be reliable. KSCRPL or its directors, employees, affiliates or representatives do not assume any responsibility for or warrant the accuracy, completeness, adequacy and reliability of such information/opinions/ views. While due care has been taken to ensure that the disclosures and opinions given are fair and reasonable, none of the directors, employees, affiliates or representatives of KSCRPL shall be liable for any direct, indirect, special, incidental, consequential, punitive or exemplary damages, including lost profits arising in any way whatsoever from the information/opinions/views contained in this Report. The possession, circulation and/or distribution of this Report may be restricted or regulated in certain jurisdictions by appropriate laws. No action has been or will be taken by KSCRPL in any jurisdiction (other than India), where any action for such purpose (s) is required. Accordingly, this Report shall not be possessed, circulated and/ or distributed in any such country or jurisdiction unless such action is in compliance with all applicable laws and regulations of such country or jurisdiction. KSCRPL requires such a recipient to inform himself about and to observe any restrictions at his own expense, without any liability to KSCRPL. Any dispute arising out of this Report shall be subject to the exclusive jurisdiction of the Courts in India.